

TRAVEL & SAFETY

Info Sheet

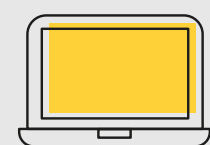
Thank you for booking your travel with Fireblade Aviation. We trust you will enjoy an exclusive travel experience with us. To ensure you have a memorable experience and take advantage of our extensive hospitality offering, we have compiled a short summary of services available and of course the necessary luggage limits and safety policies.

Dangerous Goods

Kindly note that certain items are not allowed to be carried on our flights as they are considered dangerous goods. For guidelines kindly review the below chart or declare items in question prior to flight



Infectious Substances



Recall on Apple's 15-inch Macbook Pro



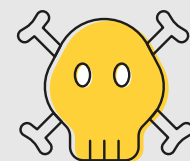
Weapons



Flammable Liquids



Oxidising Materials



Toxic Substance



Organic Peroxides



Flammable Solids



Explosives



Magnetised Materials



Corrosives



Radioactive Materials



Gases

On-site customs and immigration service making travel quicker and more convenient.

- Shower facilities
- Business lounge
- Private day rooms
- Meeting rooms
- VIP lounge
- State suite
- Secure parking
- Gym

Guest Services



Culinary services including a range of gourmet dining and catering.

On the ground or in the air, from casual dining to canapés and multi-course private dining, we have something to delight your palate. Our VIP guests can enjoy a menu developed by Michelin-starred chef Jan Hendrik van der Westhuizen.

Ideal Bag Dimensions

35cm width x 80cm length x 35cm height/13.7 inch width x 31.4 inch length x 13.7 inch height



Travelling to Tswalu Kalahari?

Please note the following luggage limits:

Because storage space in the aircraft is limited, **check-in luggage is restricted to 15kg (33 pounds)** in a soft, duffel bag, while **hand luggage is limited to 5kg (11 pounds)**. Extra seats may be purchased, at standard rates, should guests wish to travel with excess luggage.